

DÜYEK

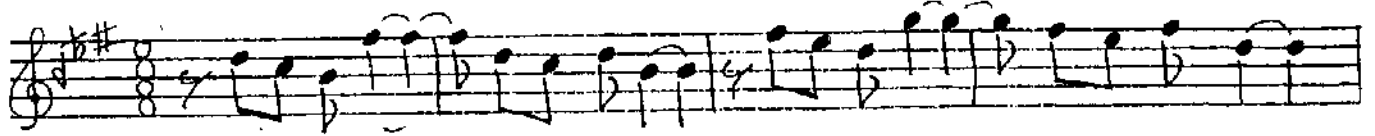
HÜZZAM ŞARKI

söz : Serap Sönmez

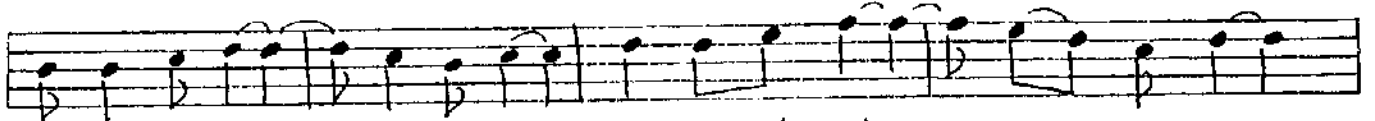
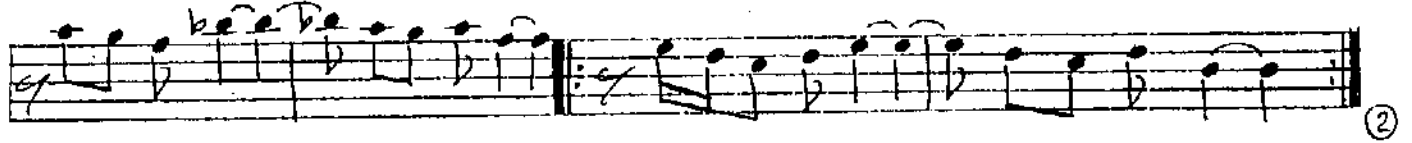
♩ = 224

(HAYALİNİ KURDUĞUM)

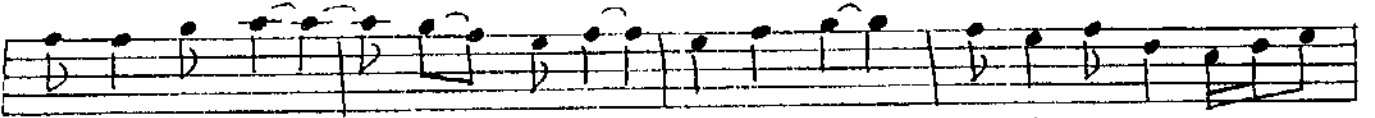
müzik : İbrahim H. Taşkent



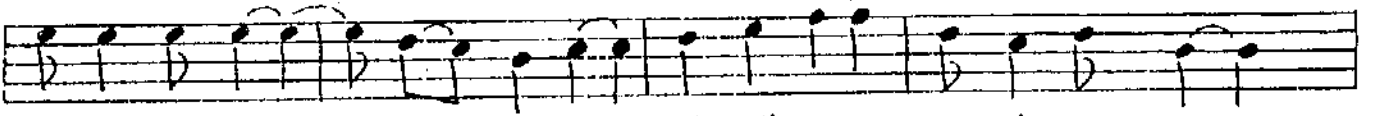
ARANAĞME :



HA YA LI Nİ KUR DU ĞUM ÖZ LE Mİ Nİ DUY DU ĞUM



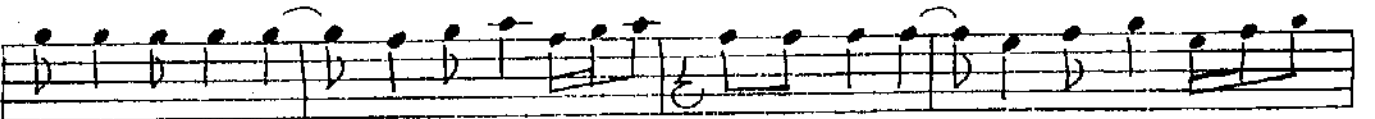
Ö MÜR BO YU UM DU ĞUM BİR DÜN YA VE RİN BA NA (saz)



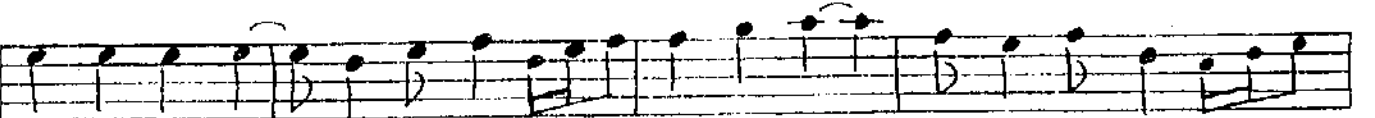
Ö MÜR BO YU UM DU ĞUM BİR DÜN YA VE RİN BA NA



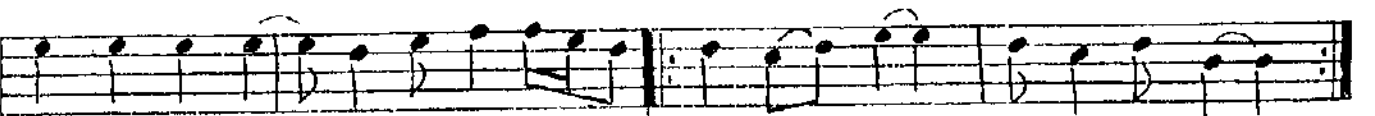
(--- saz ---)



--) ÇÖLLERİN DE GÜL O LAN (saz) KU RU DAL DA GÜL O LAN (saz)



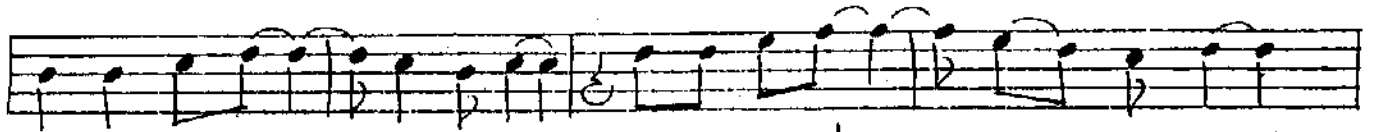
KALP TEN KAL BE YOL O LAN (saz) BİR DÜN YA VE RİN BA NA (saz)



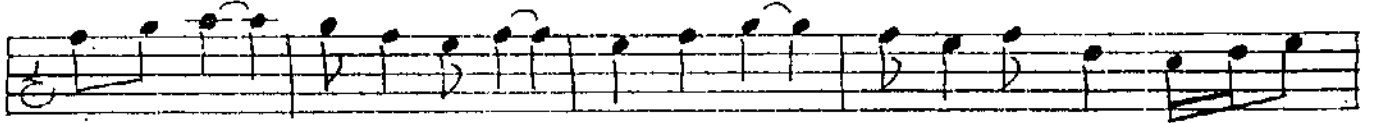
KALP TEN KAL BE YOL O LAN (saz) BİR DÜN YA VE RİN BA NA

D.C.

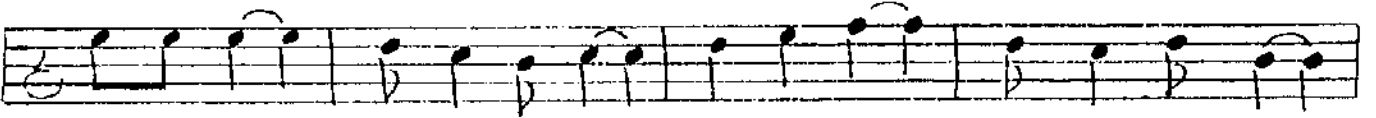
②



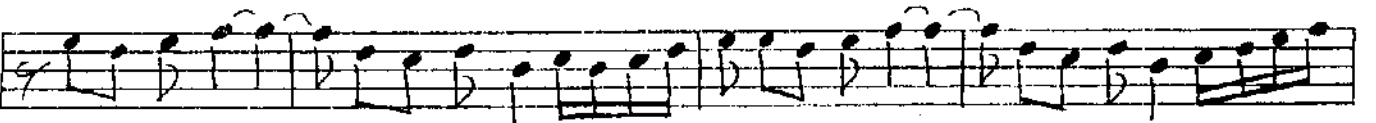
GÖZ LER DE YAŞ OL MA YAN BA HA RI HIÇ SOL MA YAN



TA DI NA DO YUL MA YAN BİR DÜN YA VE RİN BA NA (saz)



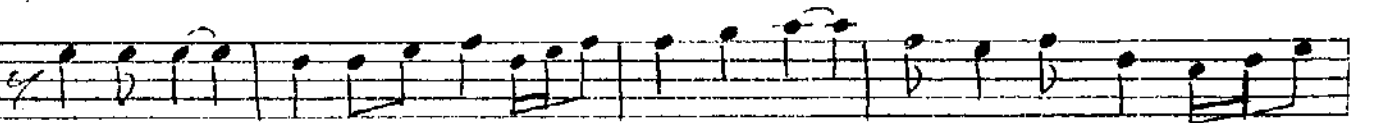
TA DI NA DO YUL MA YAN BİR DÜN YA VE RİN BA NA



(--- saz ---)



---) DALLA RI TO MURCUKLU (saz) GE LE CEK TEN U UMUT LU (saz)



HER YA NI SEV Gİ DO LU (saz) BİR DÜN YA VE RİN BA NA (saz)



HER YA NI SEV Gİ DO LU (saz) BİR DÜN YA VE RİN BA NA (SON)

(1)

HA TALİ Nİ KU ADU ĞU M
ÖZ LE Mİ Nİ DUY DU ĞU M
Ö MÜ R BO YU UM DU ĞU M
BİR DÜ NYA VE RİN BA NA

GÖ LLE RİN DE GÖ L OLAN
KU RU DAL DA EYL OLAN
KAL PTEN KAL BE YOL OLAN
BİR DÜ NYA VE RİN BA NA

(2)

GÖ ZLER DE YA Ş OL MA YAN
BA HARI HIÇ SOL MA YAN
TA DI NA DO YUL MA YAN
BİR DÜ NYA VE RİN BA NA

DALLARI TOMURCUKLU
GELECEKTEN UMUTLU
HER YANI SEVGİ DOLU
BİR DÜNYA VERİN BANA